



**benang**   
E N E R G Y

*tomorrow's energy, today*



**Benang designs, constructs and maintains safe and sustainable power systems and multi-utility networks for utility authorities and energy, mining and other infrastructure asset owners.**



## ABOUT

**Benang Energy Infrastructure was founded in 2019 based on the unique vision of creating a team-oriented and employee-empowered corporate culture. We bring integrity, reliability, experience, efficiency and safety to every task we undertake. From the beginning, "opportunities" and "challenges" have been foundation terms that define our company's performance.**

Benang is a 51% Indigenous owned, managed and controlled enterprise delivering technical, electrical, communications and ICT, rail and utility projects and associated services for clients across Western Australia and beyond. We are recognised as a Certified Supplier by Aboriginal Business Directory WA.

At Benang, we pride ourselves on providing Indigenous people with training, career development and long-term employment opportunities in the energy infrastructure sector.

Together, Jasmine, Sam and Paul are focused on assisting Indigenous people achieve sustainable employment to provide for their immediate and extended families and, ultimately, the greater community.

We have the proven capabilities to provide solutions for your rollout, installation, on-demand services and preventative maintenance needs.

As a self-performing service provider, Benang specialises in providing management, labour, materials and equipment to install and maintain infrastructure, energy and telecommunication and other facility solutions.

*Our business focus is to deliver strong growth through innovation and our team's commitment is to continually exceed your service expectations.*



## COMMITMENT & CORE VALUES

**At Benang, our vision is very clear. We will provide you with a high quality, focused solution that is individually tailored to your specific project.**

We take a proactive, team-based approach to every project. And regardless of construction challenges, our focus is to ensure that every facet of a project's development is done right the first time.

By implementing the right management structure and by deploying the best manpower, we satisfy traditional electrical construction requirements as well as emerging technologies such as renewable energy. This results in improved schedules, lower costs and higher quality installations.

***Benang just doesn't use the word 'integrity' – We are 'integ***

We understand that integrity is not just a word. It is a series of actions that defines our individual and collective ability to manage situations. We believe that strength of character, or integrity, is the only source of sustainable results. Personally, and professionally, our staff conducts themselves with the utmost respect to our clients, co-workers and our supply chain partners.

### **Our Core Values:**

**Quality.** Quality people. Quality processes. Quality outcomes.

**Integrity.** We apply best practices in our work performance and this defines us professionally and personally.

**Experience.** We are industry experts, we understand and acknowledge our responsibilities and we bring this expertise and experience to every project.

**Efficiency.** We understand the importance of maintaining tight schedules while continually monitoring budgets, and we work with precision to not only meet but to exceed project requirements.

**Reliability.** When you need our assistance and expertise, you can count on us every time.

**Safety.** We take every precaution on every project to protect our workforce's safety and the safety of everyone on the job site.

*Every day,  
we're striving to be  
the industry's best.*



## OUR CAPABILITIES

### Design. Construct. Maintain.

**A team of construction experts have the expertise, the drive and the vision to successfully deliver a project on-time and on-budget.**

Our strength lies in our ability to tackle challenging construction projects from beginning to end, regardless of the scale of the undertaking. We are experienced in planning and constructing new projects and completing refurbishments of existing infrastructure.

We have the capability to manage multiple major commissions at any one time, while maintaining a small enterprise ethos. We also enjoy taking a collaborative approach with our clients in order to build long-term relationships.

Led by our experienced project delivery team, we provide project delivery services to private enterprise and government agencies using proven methodology, quality processes and the very latest systems.

The key services we can provide across the energy and telecommunications industries include:

- Electrical
- Building and facility maintenance
- Communication networks solutions
- Engineering
- Solar and storage
- Civil engineering solutions





## OUR APPROACH

**Specialist teams, focused on their sectors, understanding each client's needs, delivering exceptional construction projects.**

### **Early involvement**

We work closely with each client's project team in the very early planning phases of a project to review drawings and propose systems to ensure that current and future power and technology requirements are met.

### **Robust project and program management**

We employ a 'start-right finish-right' philosophy and we have developed our programming techniques based on lean construction principles. Additionally, our regular reviews and world-class reporting procedures enables us to reduce waste in terms of time and materials while maximising workflow. Progress is transparently reported to our clients through our "One Report."

### **Value engineering**

Our engineering team works with each client's project team to examine and assess time-saving and cost-reduction alternatives through a comprehensive value engineering process. To save time and reduce costs, all electrical and technical installations are constantly reviewed to ensure we not only meet but exceed standard electrical industry practices.

### **Quality assurance**

From the initial review that we undertake of the electrical plans, our quality assurance protocols are applied to ensure that each project meets strict electrical code criteria, design specifications and each client's specific requirements.

### **Health, safety and the environment**

Everyone, every day, home safe. Our Health and Safety Management Systems are Certified to the QHSE Code: 2013 and fully meet the requirements of AS/NZS 4801:2001 - OHS Management Systems. At the initiation of a project, a Health and Safety Audit is undertaken to assess the hazards and put the control measures in place. Our environmental approach considers natural resources, pollution and waste recycling.

### **Comprehensive documentation**

We maintain up-to-date documentation on completed work and modifications throughout a project's progress. This comprehensive documentation ensures that future modifications and additions can be performed efficiently and cost effectively.

## OUR APPROACH



### **Punch list perfect**

We pre-punch each project to minimise the final punch list phase. This ensures that every punch list item is completed to the client's satisfaction well before the end of a project.

### **New technologies**

As an industry leader, we are continually seeking out new technologies and investigating how these technologies can assist in improving, refining and advancing a facility's present and future requirements.

### **Sustainability**

Recent legislation is changing requirements in existing and new construction to include systems and products that will protect our environment and increase energy and power efficiency. We are working hard to bring its clients information about these changes and how they will affect current space and new projects.



## OUR PEOPLE

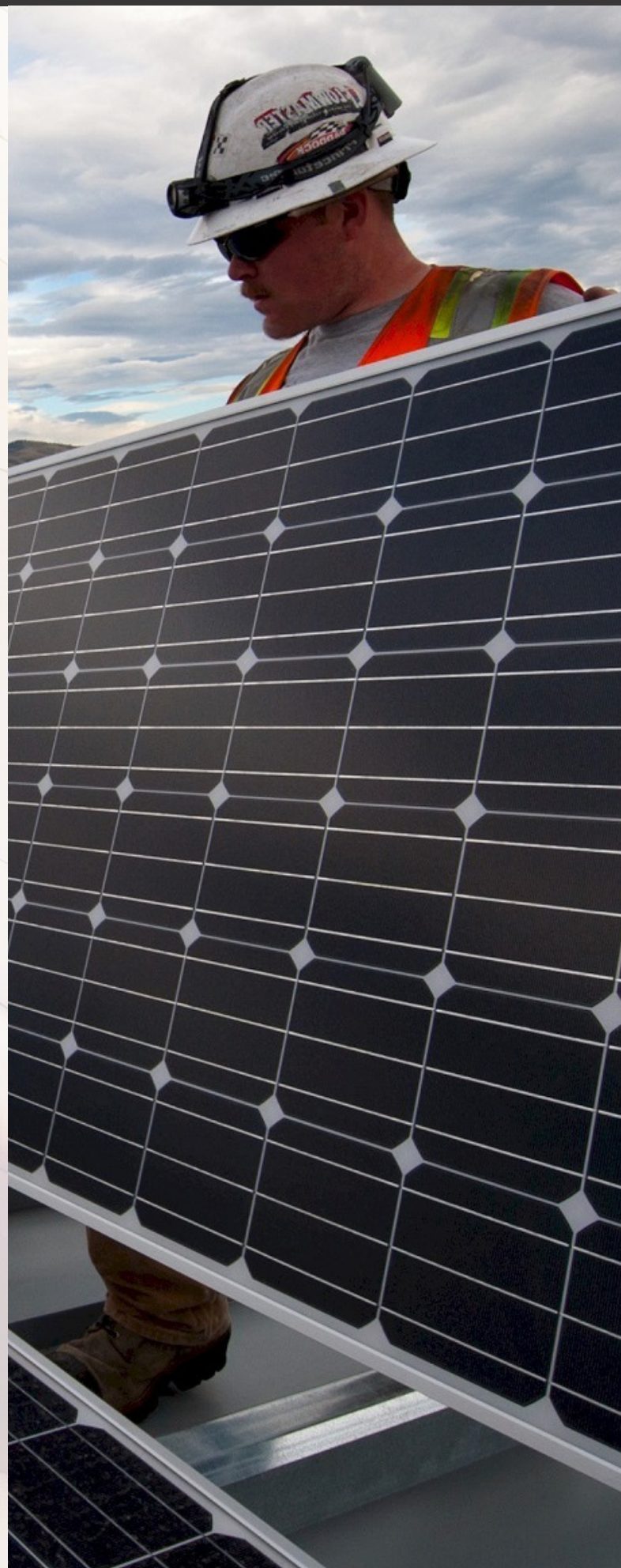
**While our people are drawn from diverse backgrounds and each person has a unique set of skills, all our staff are aligned through a shared set of values and a desire to be the best they can. Our culture is about working together to get the job done. It's about being accountable and acting with integrity. And it's about focusing on innovation and efficiencies that will benefit our clients.**

By constantly focusing on being honest, sincere and reliable, we are able to foster strong working relationships while being committed to doing business that creates mutual benefits for all involved.

Our people understand working at Benang isn't just about doing a job and going home. Moreso, it's a place where they belong and where they can grow to achieve their very best. Our people understand their contribution makes a difference and will go the extra mile to get the job done.

This is what it means to be a part of the Benang family.

*Aligned through  
shared values*





## WHY CHOOSE BENANG?

At Benang, our vision is clear. To provide you, the client with a high quality, focused solution that is individually tailored to your specific project.

We understand that your business is unique, which is why we offer a variety of delivery methods tailored specifically to your project.

As a self-performing service provider, Benang specialises in providing management, labor, materials and equipment to install and maintain infrastructure, energy and telecommunication and other facility solutions.

### Our key focus is your business

Our business focus is to deliver strong growth through innovation and our team's commitment to exceed customer expectations. We want to be at the cutting edge of development, listen, share ideas and cooperate.

#### TURN KEY SOLUTIONS

We provide beginning to end construction solutions for commercial and industrial developments. Ours is a full service package, employing the most economical methods to deliver your turn key solution.

We cover the entire electrical spectrum, from the initial consultation through to engineering design and finishing dedicated after-care service and maintenance.

#### SAFETY IS OUR PRIORITY

The health, safety and welfare of our employees and our clients is a critical component of every project we undertake.

Our safety assurance programme assists us to make informed decisions. It also provides us with the management information we need to continually improve our safety, technical and engineering performance.

#### SUSTAINABLE SUPPLY CHAIN MANAGEMENT

Whether we're constructing a commercial office, a mine site, a school or a railway, our supply chain partners are a critical key to our success.

We work to develop and nurture collaborative relationships where we can work closely together to develop solutions that manage costs, mitigate risk and improve sustainability standards.



17 Tulloch Way  
CANNING VALE, WA 6155

1 Sandhill Street  
WEDGEFILED WA 6721

1300 618 335

[projects@benangenergy.com.au](mailto:projects@benangenergy.com.au)  
[www.benangenergy.com.au](http://www.benangenergy.com.au)

Benang Energy Infrastructure Pty Ltd  
ABN 94 630 194 384 ACN 630 194 384 EC 13717